

OUR GLASS HOUSE



“Shattering.”

Lyn Gardner, The Guardian



Supported using public funding by
**ARTS COUNCIL
ENGLAND**



HAVE YOU EVER HAD TO LEAVE YOUR HOUSE IN A HURRY, DANCE DOWN THE SIDE OF YOUR BUILDING OR LEAVE WITH NOTHING, NOT EVEN THE SHOES ON YOUR FEET?

Our Glass House is a powerful site specific event that explores the issues of domestic abuse within the setting of a vacant house. Based on real life testimonies and an extensive research process with women and men who have experienced domestic abuse. Our Glass House focuses on why people stay in abusive relationships and how they leave, embracing a narrative of control, fear, love and ultimately, hope.

After letting themselves in with a key, audience members are free to roam around the house as the stories of six distinct characters unfold simultaneously.

Kayleigh is a teenager, Nicola is 7 months pregnant, Sufiya only speaks Punjabi, Dan has 2 children with a violent girlfriend, Helen is an older upper class lady and Charlie is 10 years old and has a violent and controlling father.



Created in collaboration with visual artists, sound designers, illustrators and an animator, Our Glass House reimagines the format of issue-based theatre. Part- theatre, part-gig and part-exhibition, it shares a universal and dynamic approach to storytelling.

MORE

TRAILER: <https://youtu.be/JBzvrPRzw2g>

ARTICLE: [Can a theatre show help domestic violence victims?](#) The Guardian, 2013

PRESS

"The show... takes place in one house, but it stands for what happens in many houses across the UK"

★★★★ The Guardian

"Our Glass House is immersive theatre that truly opens a door into another world"

The Independent



"Common Wealth... bring theatre to the people, about the people and give them a sense of involvement... It's simply wonderful"

The Stage

"Common Wealth have created a deeply affecting piece of immersive theatre, dealing sensitively and realistically with difficult issues"

Exeunt

MAKING IT HAPPEN

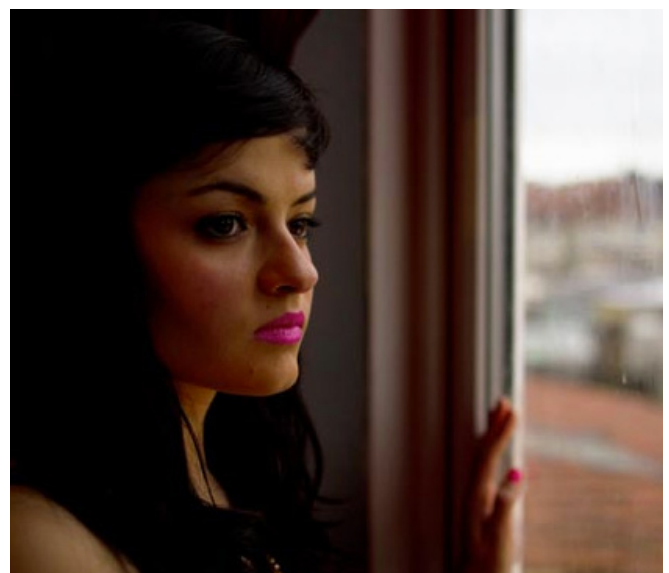
Our Glass House responds to new locations by working with local performers ensuring accents and demographics are regionally authentic. Two actors - the young boy and young woman are always cast locally. The further four actors can be cast locally, or travel from the UK with the show.

- + **AVAILABLE** - from 2021.
- + **PERFORMERS** - 6 performers: 4 women, 1 man and 1 boy aged 10-13. Cast locally, or featuring some existing cast members.
- + **PERFORMANCES** - up to 10 across 2 weeks.
- + **TOURING** - 5 to 9 people. Production team of 5 (2 artistic directors, production manager, set designer, composer) plus up to 4 actors from UK.
- + **WORKSHOPS AND TALKS** - available on request.
- + **PERFORMANCE SPACE** - a residential house on an everyday street to include 7 + rooms and an upstairs/ downstairs. Front and back garden.
- + **DURATION OF BUILD** - up to two weeks dependant on the condition of the house. All set to be sourced locally.
- + **LOCAL VOLUNTEER SUPPORT FOR BUILD** - 6+ students or residents with an interest in set design and visual art.
- + **REHEARSALS** - 2 weeks in situ with new cast members.
- + **RUNNING TIME** - 1 hour approx, with 30 min post show discussion (if required).
- + **AGE GUIDANCE** - 15+
- + **LANGUAGE** - English and Punjabi or performed in local language if translation is provided and local performers are recruited.
- + **SURTITLES** - not available due to site-specific nature of the show.
- + **FREIGHT** - none.

SHOW BIBLIOGRAPHY

Toured UK 2012-2013, visiting houses in very different neighbourhoods; the **Edinburgh Fringe**, **Bradford**, **Bristol** and **London** off site with **Camden People's Theatre** with a post-show discussion with then **Director of Public Prosecutions Keir Starmer**.

Awarded **Special Commendation Award** by Amnesty International at the Edinburgh Fringe Festival 2013, **Pick of the Fringe** by The Metro, **Theatre Highlight** by The Independent, **Hot Star** from The Scotsman.



COMPANY BACKGROUND

Common Wealth make site-specific theatre events that encompass electronic sound, new writing, visual design and verbatim. Our work is political and contemporary – based in the present day – the here and now. We make work that is relevant and addresses the concerns of our times.

We seek out places to stage our work that are right in a community; a residential house, a boxing gym, places where people who might not go to the theatre might come to instead. Our ideas are rooted in socialist politics, working class backgrounds, a keen interest in contemporary music/theatre/art/design, the people that we meet and an idealistic ambition to shift things. We see our plays as campaigns, as a way of bringing people together and making change feel possible.

GET IN TOUCH

Evie Manning
Rhianon White
Camilla Brueton

Artistic Director
Artistic Director
Producer

evie@commonwealththeatre.co.uk
rhianon@commonwealththeatre.co.uk
camilla@commonwealththeatre.co.uk

commonwealththeatre.co.uk
facebook.com/CommonWealthTheatreCo
instagram.com/common_wealthhq
twitter.com/common_wealthhq

